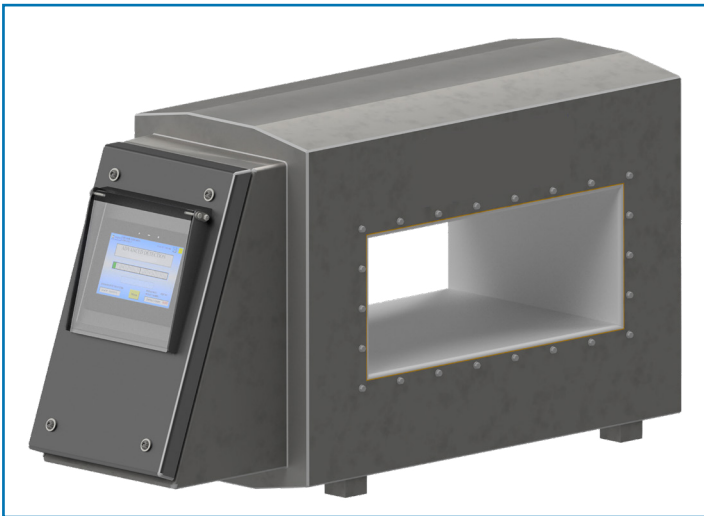




## SurroundScan® Defender III

- ◇ Expert technical support from our factory
- ◇ State of the art, high sensitivity detection levels
- ◇ Built to specific application requirements
- ◇ Three-level password protection
- ◇ Data retention when power is disrupted
- ◇ Protects precision processing equipment



### SurroundScan Defender III Metal Detector

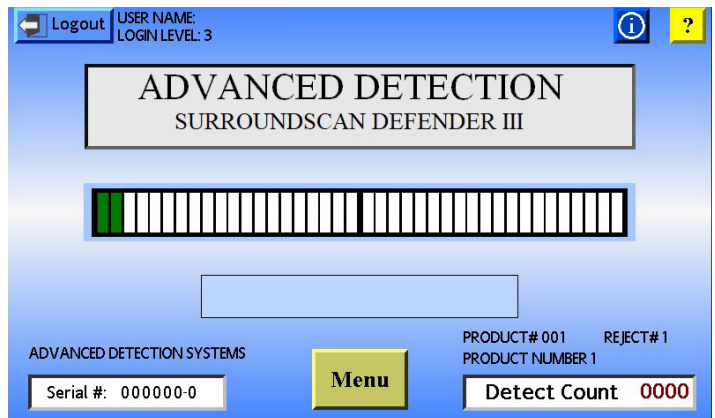
### SurroundScan Defender III in Plastics Industry

### Defender III Features

- ◇ AutoLearn is used to automatically adjust for optimal sensitivity.
- ◇ Adjustable RF protection helps compensate for environmental noise and power fluctuations.
- ◇ Digital control and processing with two channel detection.
- ◇ Data retention when power is disrupted or disconnected.

### State of the Art Detection Levels

The Defender III is used in Industrial applications when the best possible metal detection levels are required to protect processing equipment such as extruders that are damaged by small particles of metal. The Defender III is also used to ensure the product purity of textiles, plastics and rubber.



### Defender III Touchscreen





### Product Monitor

You get real time signal values for your product and the ferrous, non-ferrous and stainless-steel metal that must be detected.



### Patented Vibration Technology

Improves performance and reliability when used in a vibration heavy environment.



### Guaranteed Sensitivity

We test your product and calibrate our detectors to your product's specific needs and guarantee sensitivity.



### Acculearn™ Technology

Our detectors quickly learn your products characteristics, in as few as two passes, eliminating false trips caused by product variability.



### Custom Built

Our metal detectors are individually designed by our engineering staff and manufactured to your exact specifications.



### Heavy-Duty Construction

The SurroundScan metal detector product category reflects our history of manufacturing robust, reliable equipment.

## Remote Control Cabinet

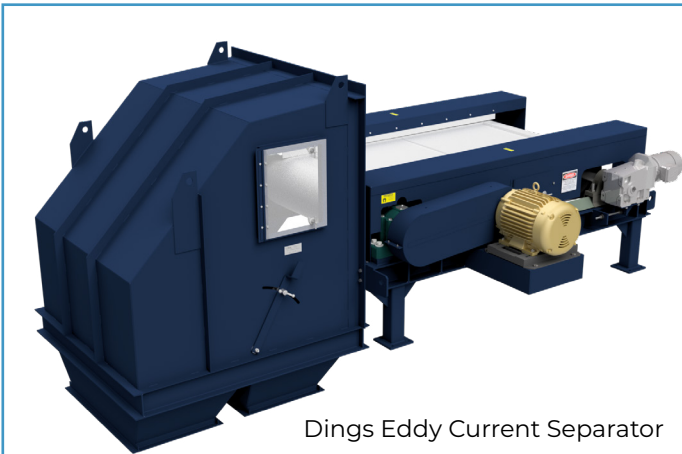


## More Information

Advanced Detection Systems has been identifying and meeting unique metal detection needs for over 30 Years.

All equipment engineered and manufactured in Milwaukee, WI USA, which lets us provide a "one stop shop" for all your metal detection needs.

The Defender III protects processing equipment that can't tolerate even the smallest particle of metal without sustaining costly damage and downtime.



Dings Eddy Current Separator



## Magnetic Separators from Dings Co. Magnetic Group

Dings Eddy Current Separators separate fractional-sized non-ferrous metals (aluminum, die-cast metal or copper) from non-metallic material. Our Eccentric Design comes with new features that optimize separation and simplify maintenance in the field. It is engineered to withstand dusty, dirty and severe outdoor environments.



Advanced Detection Systems Australian Territory Rep:

**ACCURATE INDUSTRIES P/L**

1300 101 666

admin@accurateindustries.com.au

www.accurateindustries.com.au

6/23 Ashtan Place, Banyo, Q, 4014



## Get Detection Optimized for Your Process

Have your targeted contaminants professionally tested for in our lab, free of charge. The results are used to optimize your Defender's® detection levels for your material stream's specific characteristics. We stand by this method with a written guarantee.



# ADVANCED DETECTION SYSTEMS

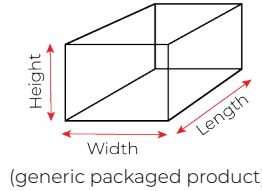
## SurroundScan Defender Quote Request

[www.adsdetection.com](http://www.adsdetection.com)  
(414) 672-0553

Company: \_\_\_\_\_ Quote Required Date: \_\_\_\_\_  
 Address: \_\_\_\_\_ Contact Person: \_\_\_\_\_  
 City,St ZIP: \_\_\_\_\_ Contact Email: \_\_\_\_\_  
 Phone/Cell: \_\_\_\_\_ Email Completed RFQ to: [sales@adsdetection.com](mailto:sales@adsdetection.com)  
 Date Equipment Required by: \_\_\_\_\_

### Packaged Product Specifications

Product Description: \_\_\_\_\_  
 Package Type: \_\_\_\_\_ (box, bag, container, etc) Package Rate: \_\_\_\_\_ ppm (packages per minute)  
 Package Orientation Through Detector: Length Leading Width Leading  
 Standing Random  
 Largest Package Dimensions: Length: \_\_\_\_\_ cm  
 Width: \_\_\_\_\_ cm  
 Product Temp: \_\_\_\_\_ °C Height: \_\_\_\_\_ cm



### Non-Packaged/Bulk Specifications

Product Description: \_\_\_\_\_  
 Throughput: \_\_\_\_\_ kg/hr  
 Product Height on Belt: \_\_\_\_\_ cm  
 Product Temp: \_\_\_\_\_ °C  
 Material Density: \_\_\_\_\_ kg/m<sup>3</sup>



### Environment Specifications

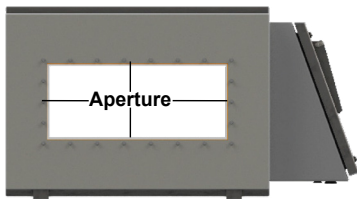
Environment Temperature: High: \_\_\_\_\_ °C Low: \_\_\_\_\_ °C Relative Humidity: \_\_\_\_\_ %  
 Metal Detector Located within 15 ft of other Detectors: Yes: \_\_\_\_\_ No: \_\_\_\_\_ TBD: \_\_\_\_\_

### Sensitivity Performance

Sensitivity Performance Specification: Ferrous: \_\_\_\_\_ mm Non-Ferrous: \_\_\_\_\_ mm  
 Stainless Steel: \_\_\_\_\_ mm No Current Sensitivity Specification

Note: If you do not have a sensitivity specification, we offer FREE PRODUCT TESTING and provide a Sensitivity Guarantee!!

### Metal Detector Specifications



(sideview of metal detector)

Aperture Height: \_\_\_\_\_ cm

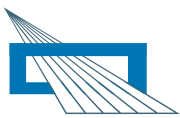
Note: Aperture height is 2"(5 cm) taller than the tallest product

Aperture Width: \_\_\_\_\_ cm

Note: Aperture width is 2"(5 cm) wider than the conveyor belt width required

Note: When determining optimum aperture size for your application - keep in mind that sensitivity performance decreases as the metal detector aperture size increases

*\* Call Us For Expert Support of Advanced Detection Systems' Equipment - Regardless of Its Age*



### Metal Detector Conveyor Selection



Packaged Product Conveyor Design:

Non-Packaged/Bulk Product Conveyor Design:

Belt Width: \_\_\_\_\_ cm

Infeed Height: \_\_\_\_\_ cm

Belt Speed: \_\_\_\_\_ mpm

Discharge Height: \_\_\_\_\_ cm

Belt Direction:    Left to Right:

Right to Left:

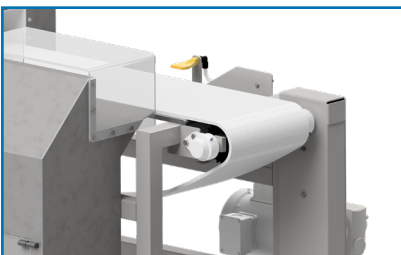
Total Weight of Products on Belt at Once: \_\_\_\_\_ kgs

### Metal Detector Reject Device Selection

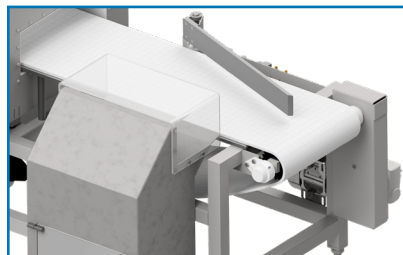
Reject Device:    Yes:                      No:                      TBD:

Reject Direction:                      Away From Detector Controls:                      Towards Detector Controls:

Stop Belt on Detect:



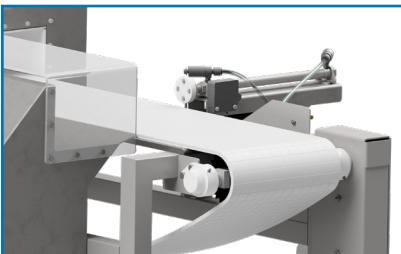
Air Blast:



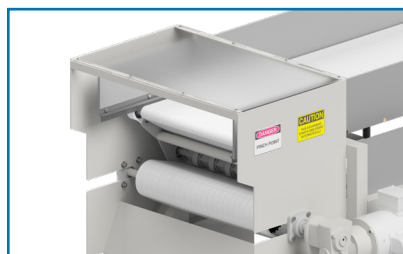
Sweep Arm:



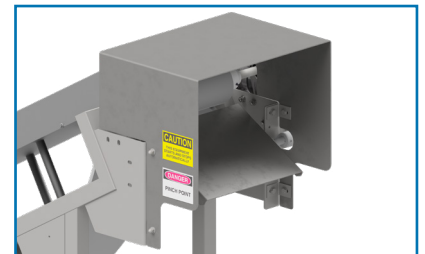
Divert Arm:



RAM (Push Arm):



Retracting Pulley:



Flop Gate:



# ADVANCED DETECTION SYSTEMS

## SurroundScan Defender Quote Request

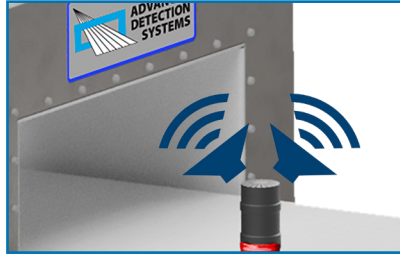
[www.adsdetection.com](http://www.adsdetection.com)  
(414) 672-0553

### Metal Detector Accessories

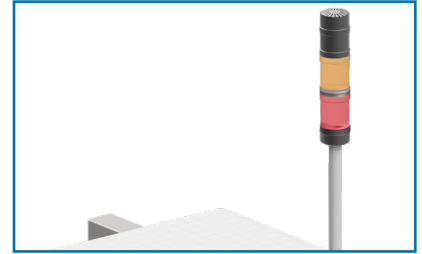
Metal Detector Accessories:



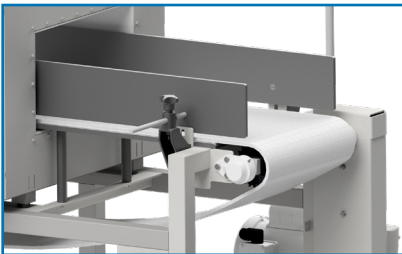
Alarm Light:



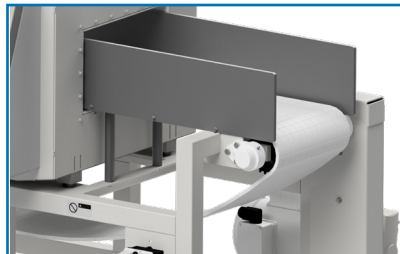
Audible Horn Alarm:



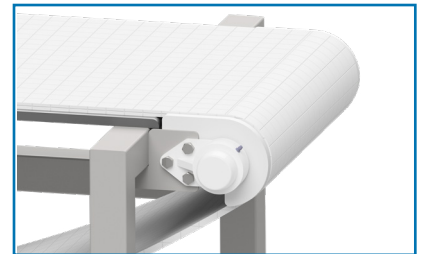
Combo Light and Horn:



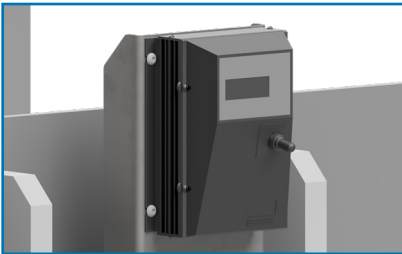
Adjustable Side Rails:



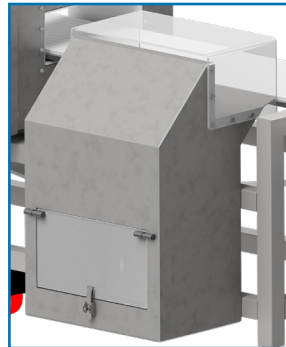
Fixed Side Rails:



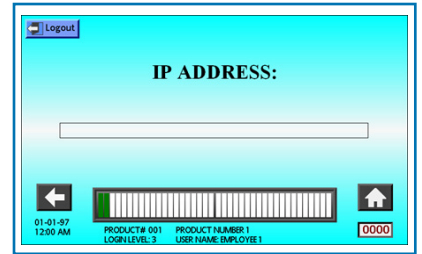
Pinch Point Guards:



DC Variable Speed Drive:



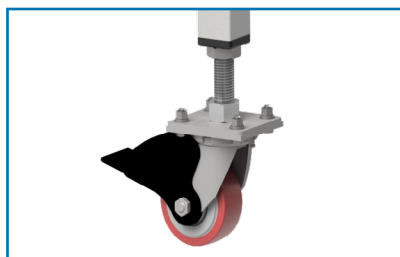
Lockable Reject Collection Bin:



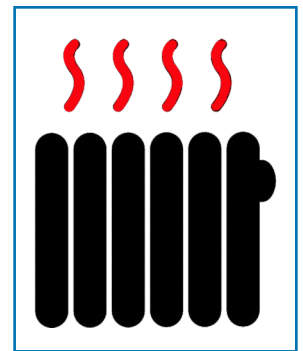
Web Enabled Touchscreen:



External Remote Control Cabinet:



Heavy Duty Casters:



Control Cabinet Heater:

Special Options: \_\_\_\_\_  
\_\_\_\_\_